

C.Brucella Ab

General Information

Purpose : Detection of Canine Brucella antibody

Principle : Immunochromatographic assay

Specimen : Whole blood, plasma or serum

Materials provided :

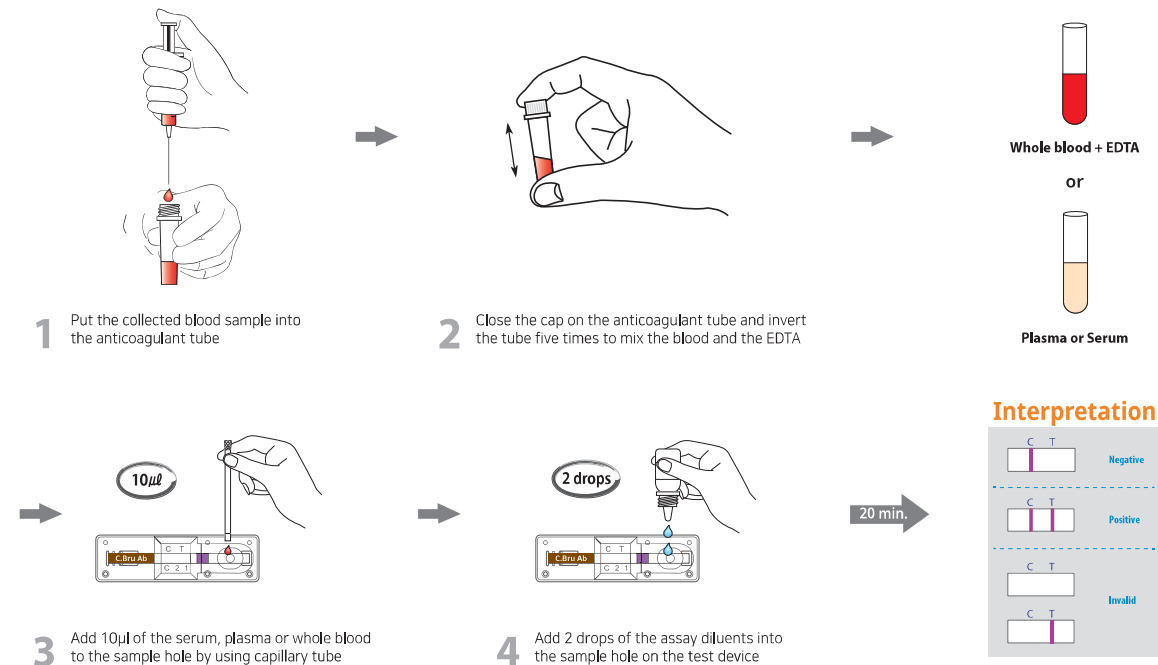
- Anigen Rapid C.Brucella test device
- Assay diluents bottle
- Anticoagulant tube
- Disposable capillary tube

Special Features :

- One-step testing procedure : Quick & Accurate
- High sensitivity and specificity
 - Sensitivity : 90 % vs. Virus Isolation method
 - Specificity : 90.1 % vs. Virus Isolation method



Test Procedure



Ordering Information

| Cat. No. | Description | Type | Pack size |
|----------|---------------|--------|--------------|
| RB2103DD | C.Brucella Ab | Device | 10 Tests/Kit |